



ENTRON™

Controls, LLC.

MICROPROCESSOR BASED RESISTANCE WELDING CONTROLS

PRODUCT CATALOG and SPECIFICATIONS

Effective: 01/08

Supersedes: 09/07

ENTRON Controls, LLC.

601 High Tech Court

Greer, SC 29650

(864) 416-0190

FAX (864) 416-0195

www.entroncontrols.com

e-mail: info@entroncontrols.com



ENTRON™

Controls, LLC.

MICROPROCESSOR BASED CONTROLS

TABLE OF CONTENTS SERIES BULLETINS

ENTRON User Discount Schedule	750001
ENTRON Limited Warranty	750003
ENTRON Cabinet Guide	780054
EN1000 Multiple Schedule/Multiple Sequence Controls	780044
EN1000 Series Controls Specifications	750040
EN1001 Constant Current/Multiple Sequence Controls	780048
EN1001 Series Controls Specifications	750043
EN1721 Single Phase AC Constant Current Controls	780087
EN1500 Seam Welding Controls/Specifications	780061
EN1701 Mid Frequency Inverter Constant Current Controls	780079
EN1003 Multiple Schedule/Multiple Sequence 3 Phase DC Controls	780056
EN1003 Series Controls Specifications	750046
EN50 Basic Weld Timer & Components	780086
EN50 Basic Weld Timer & Components Specifications	750069
EN2000 Dual Schedule/Dual Sequence S2H Controls	780049
EN2000 Series Controls Specifications	750045
EN1000 Cascade/Multi-Valve Controls	780046
EN1000 Series Cascade/Multi-Valve Controls Specifications	750038
EN1000 Multiple Controls in Single Cabinet	780057
ENTRON Flat Plate Controls	780084
EN1000 Series Bench Controls	750042
EN2130 Series Bench Controls with Valve Output/Specifications	780063
EN2150 Series Bench Controls without Valve/Specifications	780064
EN1280 Flash/Anneal Welding Controls/Specifications	780067
EN1380 Butt or Flash Weld Controls with Anneal Sequence/Specifications	780066
ENTRON Intergrated Pressure Sense Control System	780081
ENTRON MM2/MM8 Memory Module	780082
ENTRON Networking Components	780077
ENLINK and ENLINK Cascade	780068
ENTRON RT4jr. – Remote Terminal	780085
ENTRON Welder Interlock	780083
ENTRON WA1 Weld Analyzer	780088

Contact your ENTRON Controls
Representative or Your Local Resistance
Welding Equipment Source

ENTRON™

ENTRON Controls, LLC.
601 High Tech Court
Greer, SC 29650
(864) 416-0190
FAX (864) 416-0195
www.entroncontrols.com
e-mail: info@entroncontrols.com

RWMA⁷
MEMBER

750017-0108



Resistance Welding Controls

Series Bulletin: User Discount Schedule

Date: April 2006 Supercedes: July 1996

DISCOUNT SCHEDULE

To be applied to published List Prices

- Resistance Welder Controls, Printed Circuit Board Assemblies and Control Sub-Assemblies:

	QUANTITY	DISCOUNT	MULTIPLIER
Class I Purchaser: Customer who purchases controls directly from welding machine manufacturers, their authorized agents or from ENTRON Controls, and assume the responsibility of installation of the control on a welding machine.	Any	Net	1

	QUANTITY	DISCOUNT	MULTIPLIER
2. Resistance Welder Control Maintenance and Spare Parts: Class I Purchaser:	Any	Net	1

- Prices and Discounts are subject to change without notice. In the event of a price increase, the previous price will be maintained for equipment on order and allowed to be shipped within 30 days of the effective date of the price increase. In the event of a price decrease, the lower price will be applied to any part of the open order not shipped. Equipment shipped and invoiced against any such order is not subject to the lower price.

- Minimum Billing: \$50.00
- Terms: Net 30 Days
- Freight Charges: F.O.B., Greer, SC



ENTRON Controls, LLC.
 601 High Tech Court
 Greer, SC 29650
 (864) 416-0190
 FAX (864) 416-0195
 www.entroncontrols.com
 e-mail: info@entroncontrols.com





Resistance Welding Controls

Series Bulletin: Warranty

Date: April 2006 Supercedes: May 2005

ENTRON LIMITED WARRANTY

Important: Please read carefully. Our warranty statement provides critical information regarding your ENTRON weld control and subsequent service policy.

ENTRON Controls, LLC., warrants that all ENTRON control panels, **EXCEPT** the silicon controlled rectifiers (SCRs), insulated gate bipolar transistors (IGBT's), SCR and IGBT assemblies, circuit breakers, and electro-mechanical contactors, are free of manufacturing defects for a period of **TWO YEARS** from the date of original purchase and, in the event of a manufacturing defect, ENTRON will repair or replace, at its discretion, the defective part without any cost for parts or labor.

All silicon controlled rectifiers, SCR assemblies, IGBT assemblies, circuit breakers, Inverter controls carry a one year warranty from the date of original purchase, and electro-mechanical contactors in ENTRON control panels are covered by a **limited warranty from the original manufacturer**. If these parts fail because of a manufacturing defect they will not be repaired or replaced by ENTRON, but will be returned by ENTRON to the original manufacturer in accordance with said manufacturer's warranty.

To obtain repairs or replacement under this warranty, the defective part may be returned, prepaid, to ENTRON Controls, LLC., 601 High Tech Court, Greer, South Carolina 29650. Please send your repair to the attention of "service" with a description of the problem you are experiencing, contact person and phone number.

EXCLUSIONS: This warranty does not cover damage by accident or misuse, unauthorized repair or modification to any control assembly by the customer.

Important Note: The warranty period is considered from the date of shipment and is tracked by a serial number code.

USE OF OUT OF WARRANTY REPAIR SERVICE: To obtain service for any printed circuit board assembly after two years from the date of purchase, send the assembly, prepaid, to ENTRON Controls, LLC., and ENTRON will repair the printed circuit board assembly and return it to you without further warranty. Additional service charges may be invoiced at time of shipment.

Thank you for using ENTRON Controls.

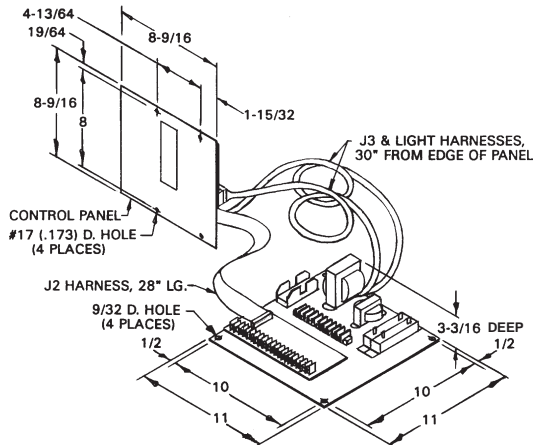
Your ENTRON Controls, LLC., representative is always available to assist you with your control or welding problems. Our sales representatives, Original Equipment Manufacturers, Dealers and Distributors are always supported by direct factory assistance. Do not hesitate to call for prompt, professional assistance – 864-416-0190. There is no charge for this assistance.

ENTRON Controls, LLC.
601 High Tech Court
Greer, SC 29650
(864) 416-0190
FAX (864) 416-0195
www.entroncontrols.com
e-mail: info@entroncontrols.com

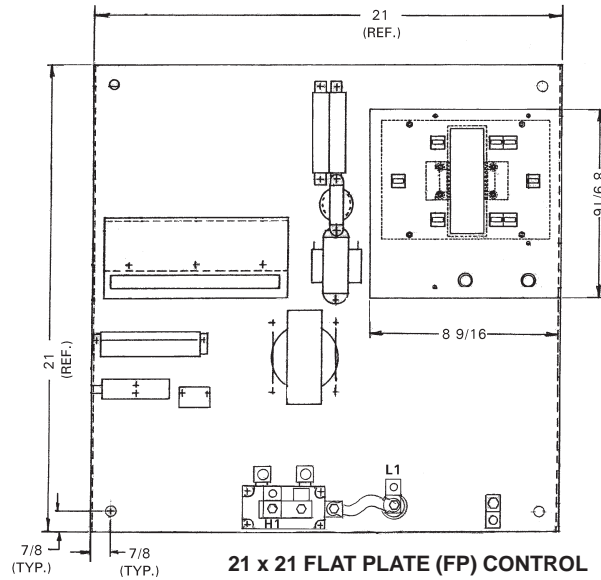
FLAT PLATE

CABINET TYPE	AVAILABLE CONTROL MODELS
FP	EN1000, EN1001, EN1500, EN2000
CASCADE FP	EN1000 CASCADE, EN1001 CASCADE
IMU	EN1000, EN1001

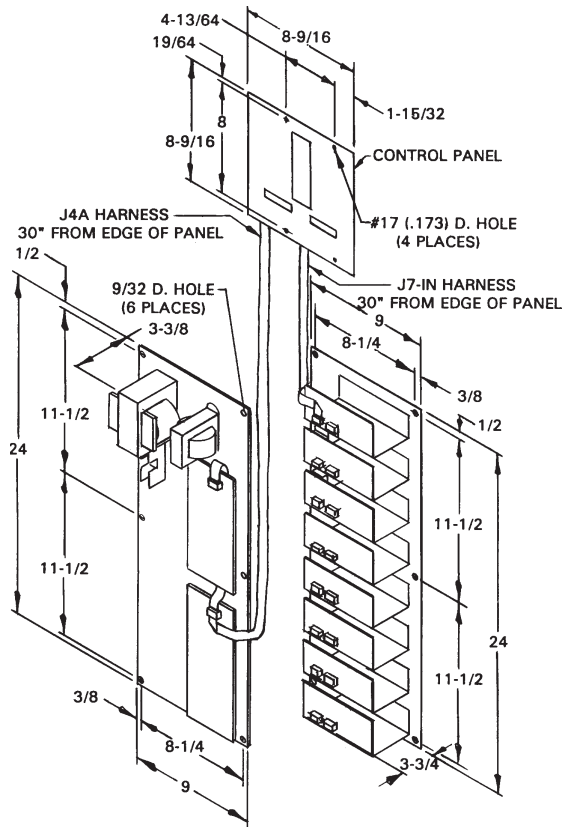
CONTACTOR SIZE	MAX. NO. OF CONTACTORS	CIRCUIT BREAKER
EXT. SCR	1	NOT AVAILABLE
EXT. SCR	UP TO 8	NOT AVAILABLE
EXT. SCR	1	NOT AVAILABLE



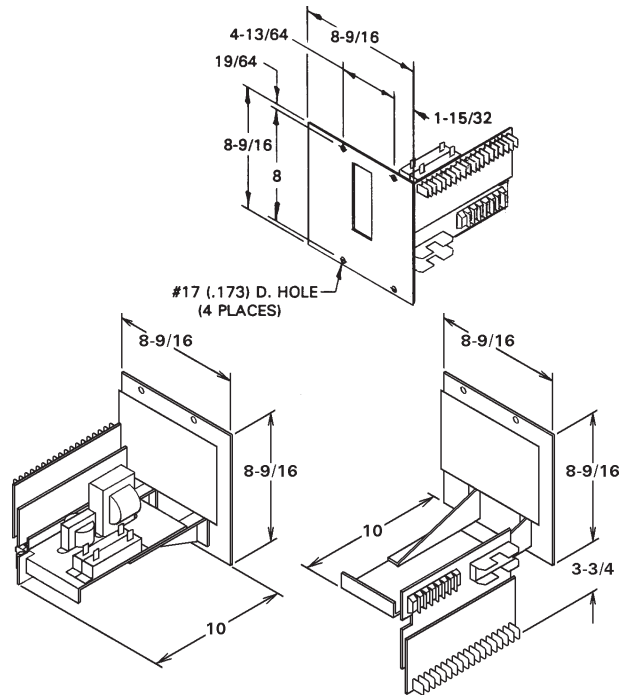
11 x 11 FLAT PLATE (FP) CONTROL



21 x 21 FLAT PLATE (FP) CONTROL



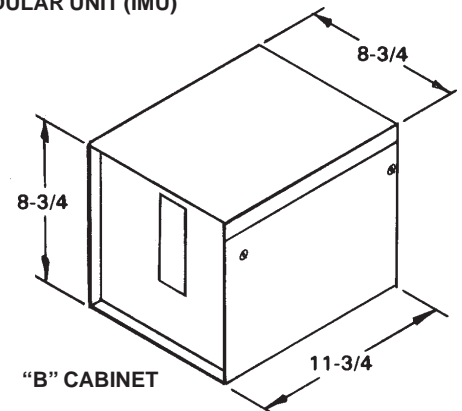
CASCADE FLAT PLATE CONTROL



INTEGRATED MODULAR UNIT (IMU)

"B" CABINET

AVAILABLE CONTROL MODELS	CONTACTOR SIZE	MAX. NO. OF CONTACTORS	CIRCUIT BREAKER
EN1000-B	150A	1	NOT AVAILABLE



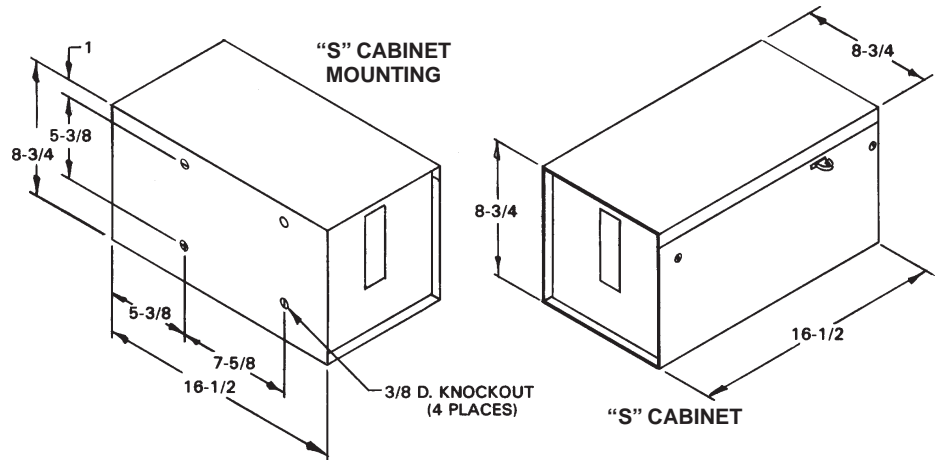
"B" CABINET

“S” CABINET

AVAILABLE CONTROL MODELS
EN1000, EN1001, EN2000

CONTACTOR SIZE	MAX. NO. OF CONTACTORS
EXT. IGN.	1
EXT. SCR	1
150A	1
300A	1
1200A	1

CIRCUIT BREAKER – NOT AVAILABLE

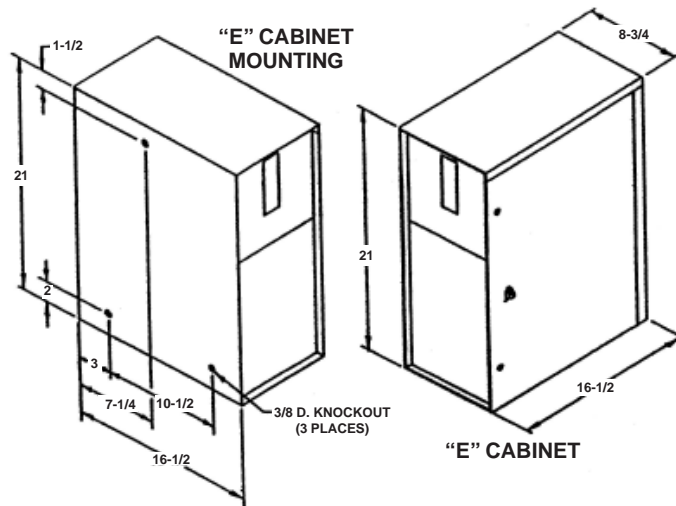


“E” CABINET

AVAILABLE CONTROL MODELS
EN1000, EN1001, EN2000

CONTACTOR SIZE	MAX. NO. OF CONTACTORS
EXT. IGN.	1
EXT. SCR	1
300A	1
1200A	1
1800A	1
2200A	1

CIRCUIT BREAKER – NOT AVAILABLE

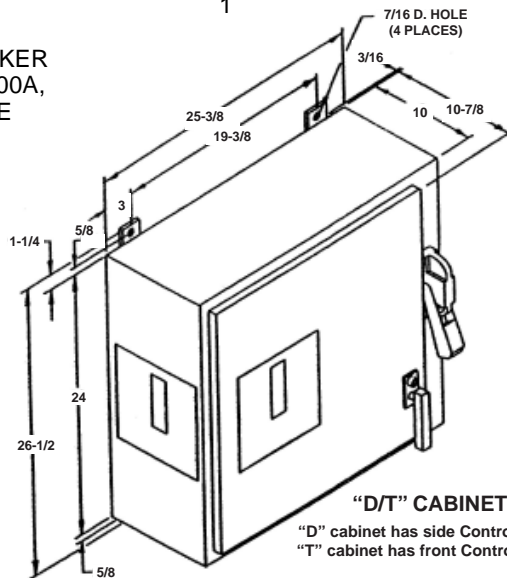


“D/T” CABINET

AVAILABLE CONTROL MODELS
EN1000, EN1001, EN2000, EN1003, EN1000 CASCADE

CONTACTOR SIZE	MAX. NO. OF CONTACTORS
EXT. IGN.	2
EXT. SCR	4
300A	3
1200A	3
1800A	1
2200A	1

CIRCUIT BREAKER
100, 200, OR 400A,
2 OR 3 POLE

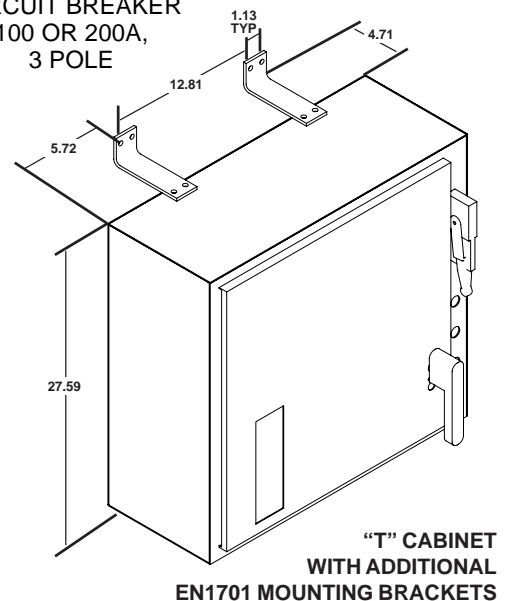


“T” CABINET

AVAILABLE CONTROL MODELS
EN1701

CONTACTOR SIZE	MAX. NO. OF CONTACTORS
300A	1
600A	1

CIRCUIT BREAKER
100 OR 200A,
3 POLE

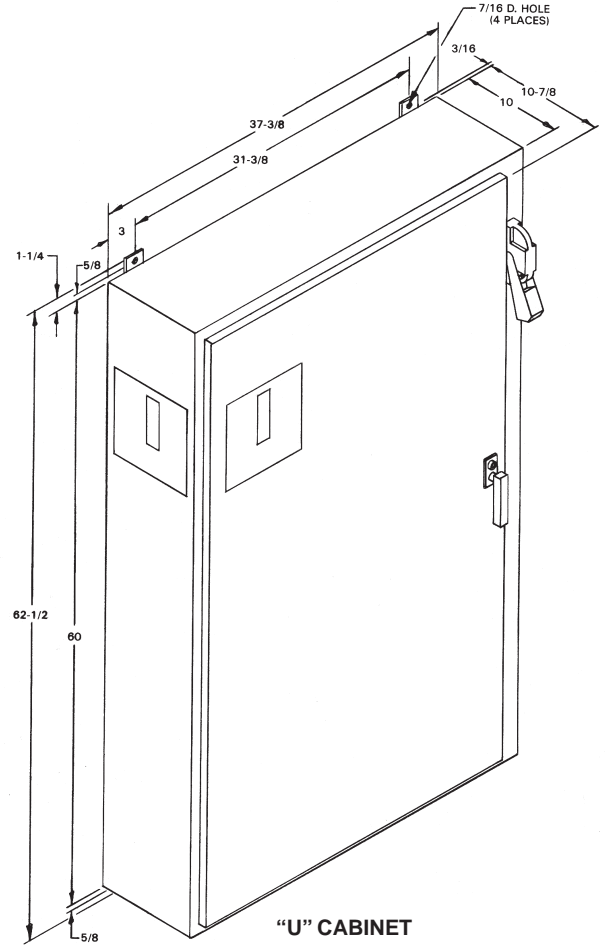


"U" CABINET

AVAILABLE CONTROL MODELS
 EN1000, EN1001, EN2000, EN1003, EN1000 CASCADE,
 MULTIPLE EN1000, MULTIPLE EN1001

CONTACTOR SIZE	MAX. NO. OF CONTACTORS
1200A	8
1800A	6
2200A	6

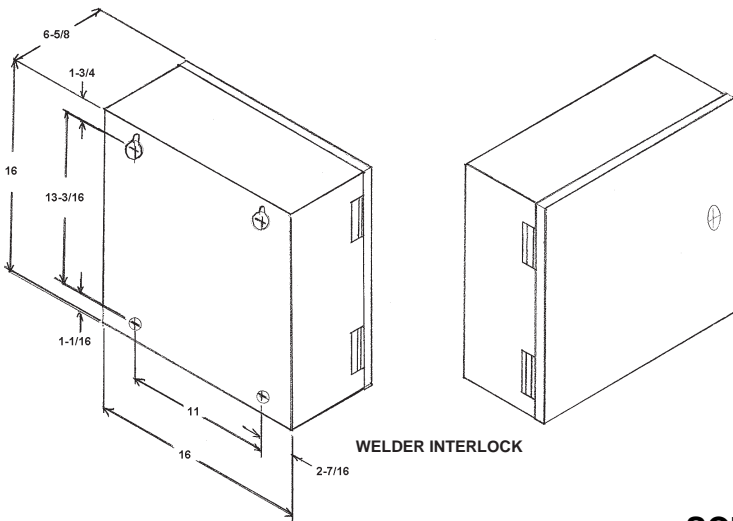
CIRCUIT BREAKER
 100, 200, 400,
 600 OR 800A,
 2 OR 3 POLE



"U" CABINET

WELDER INTERLOCK

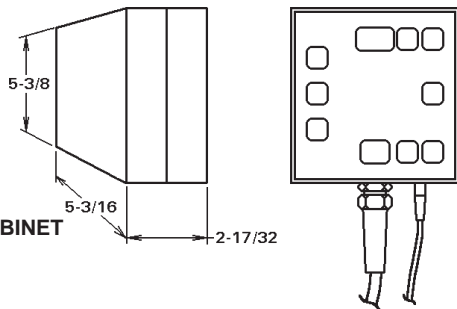
EN2WI-SS to EN8WI-SS



WELDER INTERLOCK

REMOTE TERMINAL CABINET (RT4jr.)

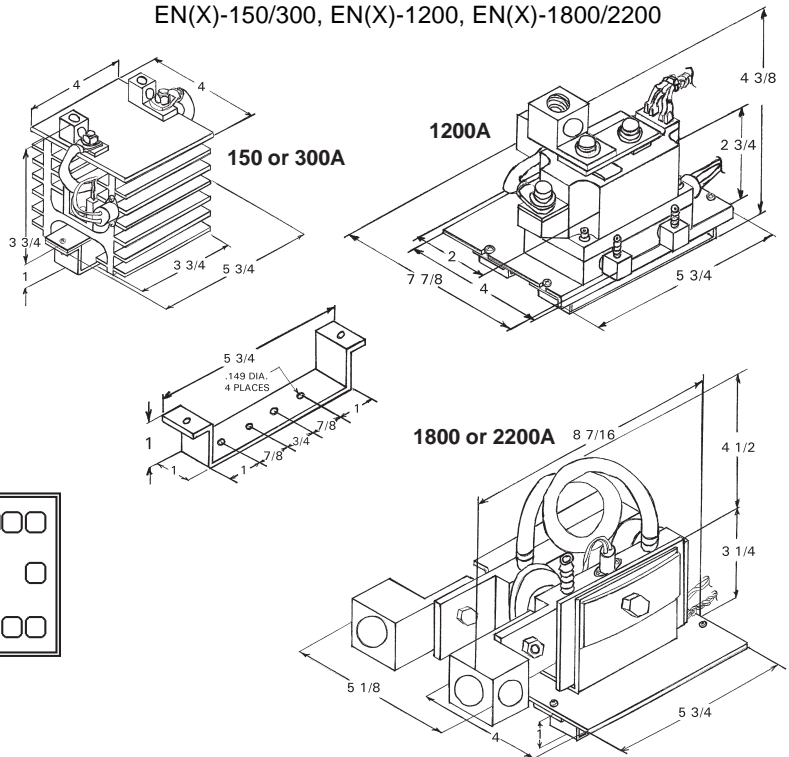
Used for remote, long distance mounting of Control Panel via RS485 for EN1000, EN1001 and EN2000 Controls



RT4jr. CABINET

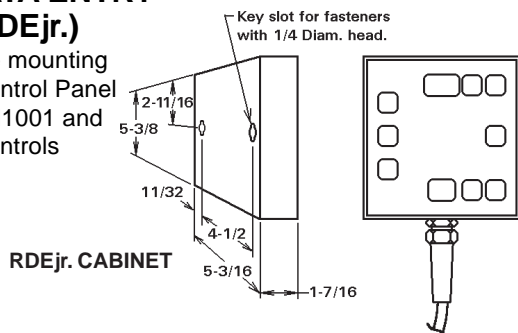
SCR CONTACTOR ASSEMBLIES

EN(X)-150/300, EN(X)-1200, EN(X)-1800/2200



REMOTE DATA ENTRY CABINET (RDEjr.)

Used for remote mounting (6 feet) of the Control Panel for EN1000, EN1001 and EN2000 Controls



RDEjr. CABINET

CAB.	TYPE OF CONTROL	CONTACTOR SIZE	MAX. NO. OF CONTACTORS	CIRCUIT BREAKER
FP	EN1000, EN1001, EN1500, EN2000	EXT. SCR	1	NOT AVAILABLE
FP	EN1000 CASCADE, EN1001 CASCADE	EXT. SCR	UP TO 8	NOT AVAILABLE
IMU	EN1000, EN1001	EXT. SCR	1	NOT AVAILABLE
B	EN1000-B	150A	1	NOT AVAILABLE
S	EN1000, EN1001, EN2000	EXT. IGN. EXT. SCR 150A 300A 1200A	1 1 1 1 1	NOT AVAILABLE
E	EN1000, EN1001, EN2000	EXT. IGN. EXT. SCR 300A 1200A 1800A 2200A	1 1 1 1 1 1	NOT AVAILABLE
D/T	EN1000, EN1001, EN2000, EN1003, EN1000 CASCADE	EXT. IGN. EXT. SCR 300A 1200A 1800A 2200A	2 4 3 3 1 1	100, 200, OR 400A, 2 OR 3 POLE
T	EN1701	300A 600A	1 1	100 OR 200A, 3 POLE
L	EN1000, EN1001, EN2000, EN1003, EN1000 CASCADE, MULTIPLE EN1000, AND MULTIPLE EN1001	EXT. IGN. EXT. SCR 300A 1200A 1800A 2200A	6 8 4 3 3 3	100, 200, 400, 600, OR 800A, 2 OR 3 POLE
H	EN1000, EN1001, EN2000, EN1003, EN1000 CASCADE, MULTIPLE EN1000, AND MULTIPLE EN1001	EXT. IGN. 300A 1200A 1800A 2200A	8 6 4 4 3	100, 200, 400, 600, OR 800A, 2 OR 3 POLE
G	EN1000, EN1001, EN2000, EN1003, EN1000 CASCADE, MULTIPLE EN1000, AND MULTIPLE EN1001	1200A 1800A 2200A	6 5 4	100, 200, 400, 600, OR 800A, 2 OR 3 POLE
U	EN1000, EN1001, EN2000, EN1003, EN1000 CASCADE, MULTIPLE EN1000, AND MULTIPLE EN1001	1200A 1800A 2200A	8 6 6	100, 200, 400, 600, OR 800A, 2 OR 3 POLE
—	WELDER INTERLOCK	N/A	N/A	N/A

THE REMOTE CABINET IS USED FOR REMOTE MOUNTING OF THE CONTROL PANEL FOR EN1000, EN1001 AND EN2000 CONTROLS.

SEE CATALOG FOR AVAILABILITY AND PRICE OF SPECIFIC CABINET/CONTACTOR/CONTROL CONFIGURATIONS.

Distributed by:

ENTRON™

ENTRON Controls, LLC.
601 High Tech Court
Greer, SC 29650
(864) 416-0190
FAX (864) 416-0195
www.entroncontrols.com
e-mail: info@entroncontrols.com

RWMA⁷
MEMBER